

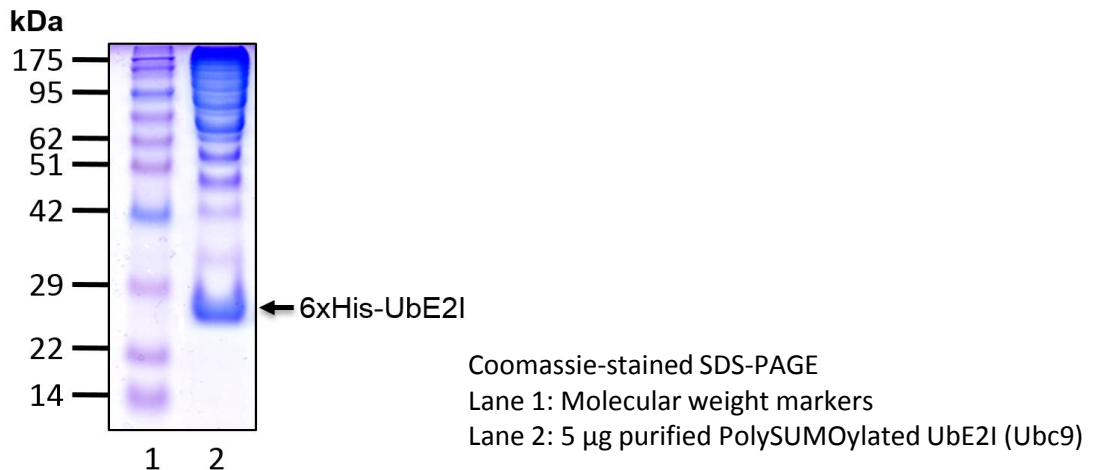
PolySUMOylated UbE2I (Ubc9)

Cat. # G7020

Also Known as: N/A
NCBI Reference: N/A
MW (no tag): N/A
Species: Human
Source: Bacterial recombinant
Tag: No
Stock Buffer: 20 mM Tris, 150 mM NaCl, 2 mM β ME, 10% Glycerol
Concentration: See tube label
Quality Assurance: >90% by SDS-PAGE

Description: PolySUMOylated UbE2I (Ubc9) is a polySUMOylated substrate in which various SUMO2-linked polySUMO chains were conjugated on the SUMO conjugating enzyme UbE2I via isopeptide bonds. It can be used as a substrate to monitor deSUMOylation mediated by deSUMOylating enzymes, or to determine binding of SUMO2-linked polySUMO chains by proteins containing SUMO interacting domains.

Images:



Storage: Store at -80°C ; avoid multiple freeze-thaw cycles





UBPBio
12635 E. Montview Blvd. Ste 100
Aurora, CO 80045, USA
Fax: 1-800-682-6801
Email: info@ubpbio.com
www.ubpbio.com

